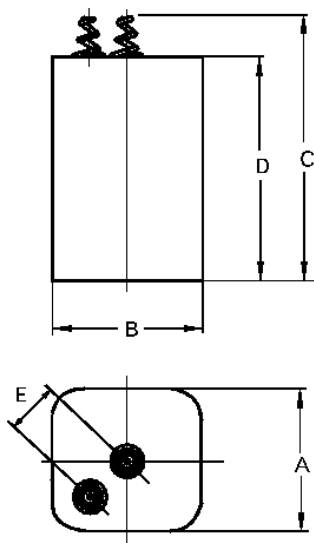


Type Designation	431
Designation IEC	4R25
System	Zn-MnO ₂ (Zinc Chloride)
Shelf Life (Coding)*	3 years
Nominal Voltage [V]	6.0
Typical Capacity C [mAh]	8500 (discharge with high-resistance)
Permissible Temperature Range	- 10 °C ... 50 °C
Weight, approx. [g]	520
Volume [ccm]	400



Dimensions [mm]

min: max:

A	65	67
B	65	67
C	108	115
D	97	102
E	23	27

Typical Capacities (at 20°C):

Discharge Type	Load	End Voltage[V]	3.6
Portable lighting 30m/d,7d/w	8.2 Ω	Time [h]	10,5
		Capacity [Ah]	5,7
		Energy [Wh]	25,3
Discharge Type	Load	End Voltage[V]	3.6
Portable lighting 30m/h,8h/d,7d/w	9.1 Ω	Time [h]	11.45
		Capacity [Ah]	5.65
		Energy [Wh]	25.12
Discharge Type	Load	End Voltage[V]	3.6
Road warning lamps 12h/d,7d/w	110 Ω	Time [h]	190
		Capacity [Ah]	8,5
		Energy [Wh]	42,31

No publication or circulation of data to third parties without consent of VARTA Consumer Batteries

* In consideration of typical loss of capacity at storage and application.